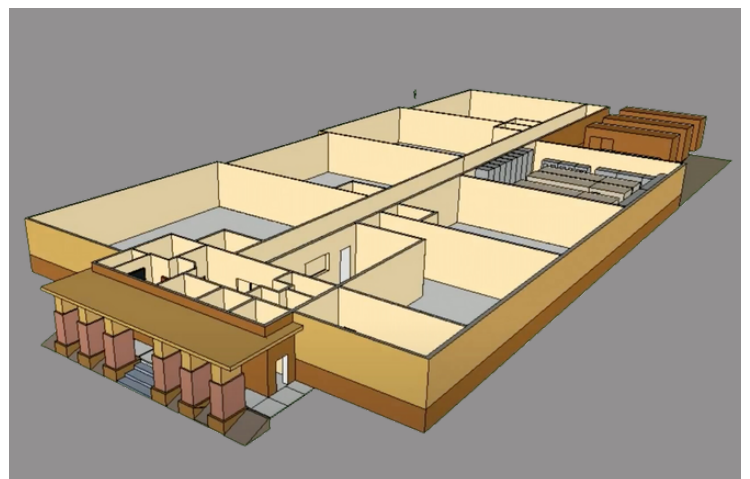
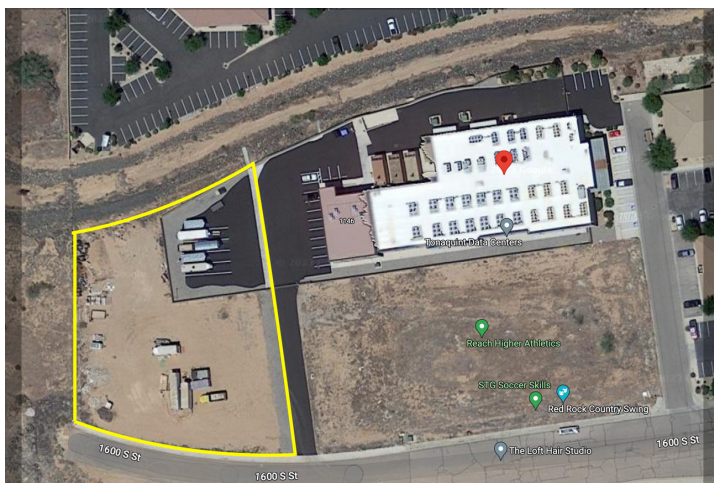


TONAQUINT DATA CENTERS

# BUILT TO SUIT DATA CENTER AVAILABLE

1108 WEST 1600 SOUTH, ST GEORGE, UT 84770



## PROPERTY HIGHLIGHT

- 1.65 Acres
- 15,000 SF Raised Floor
- 4MW Purpose-Built Facility
- 18-Month Construction Build
- Multiple Fiber Paths Onsite
- Ready to Build

Inquiries : +435.632.8286

info@tonaquint.com

www.tonaquint.com

# Introduction

Tonaquint Phase II Data Center with complete infrastructure for 4MWs of critical load in place. Available for build immediately. Ideal facility for primary colocation, edge, or disaster recovery applications. This 15,000 SF, purpose-built data center on approximately 1.65 acres of land is served by two, 15,000kVA (30,000kVA total) feeds of utility power. Four (4) MW of gross utility load serve the building. The existing configuration supplies the data center with two (2) 2MW feeds of redundant power from geographically diverse sub-stations provided by city utility. The data center has five (5) 3,000 SF contiguous data halls totaling 15,000 SF with 36" raised floor and 2.5 MW of UPS infrastructure.

## SUMMARY

- 15,000 SF of 36" raised floor (five data halls)
- Adjacent to Tonaquint Phase I
- Build ready
- DIF Capital Partners Portfolio Company
- Multiple Fiber provider and southern Utah hub.
- Electrical / Mechanically designed at Tier III standards
- 24/7/365 NOC



**Tier III Design with ample power**



**Premier Disaster Safe location**



**Low Electric costs  
6.5 cents/kWh**



**Secure Campus with  
24/7/365 NOC**



# DESIGN OVERVIEW



**FACILITY SIZE** - 24,000 Sq. Ft.

---

**RAISED FLOOR AREA** - 15,000 usable Sq. Ft.

---

**FLOOR LOAD** - 625 PSF

---

**BUILDING ACCESS** - 24/7 - 365

---

**BUILDING SECURITY** - Biometric security system/Video surveillance On-site personnel 24/7/365. Shipping & receiving dock with remote monitored gate and secured storage.

---

**LOADING AREA** - Finished 10 ft from raised floor

---

**CARRIER NEUTRAL**- Century Link, Zayo, Level3, TDS, Utopia, Cogent, Comcast

---

**COMMERCIAL POWER** - City Municipal power. 15 Megawatt primary substation. 15 Megawatt secondary substation. Total power capacity 4 Megawatts

---

**FUEL TANK** - Fuel storage at minimum 48-hour run time. 6,000 gallons on-site.

---

**GENERATORS** - Three (3) 2 Megawatt Caterpillars and eight (8) 750 KVA Liebert UPS units. Generator plant designed at minimum N+1 redundancy

---

**FIRE SUPPRESSION** - VESDA double interlock pre-action throughout

---

**HVAC** - Forty (30+ton) DS, SX, DSE CRAC units

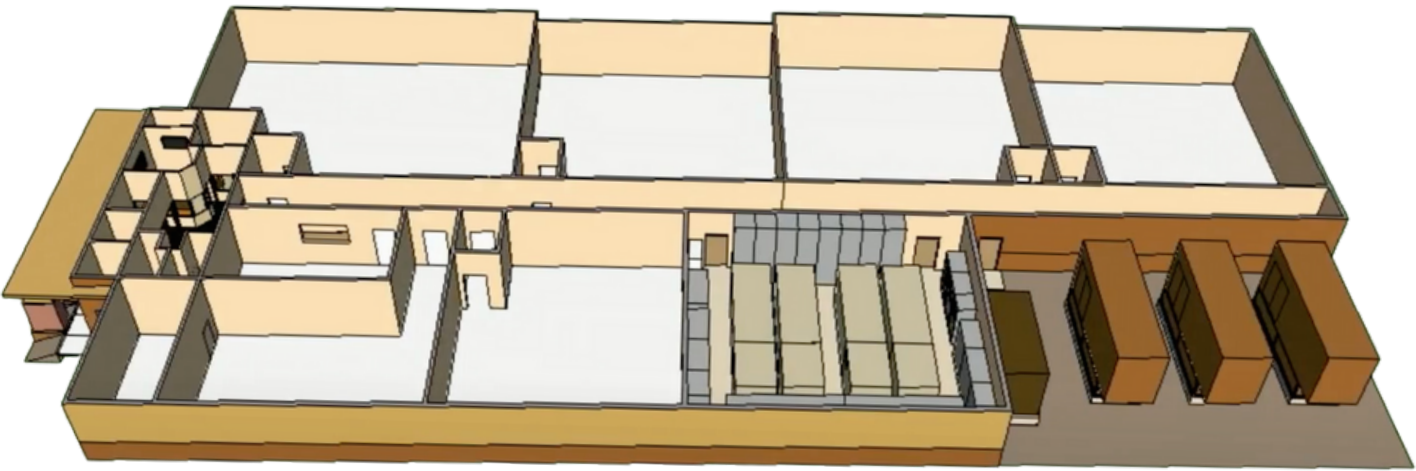
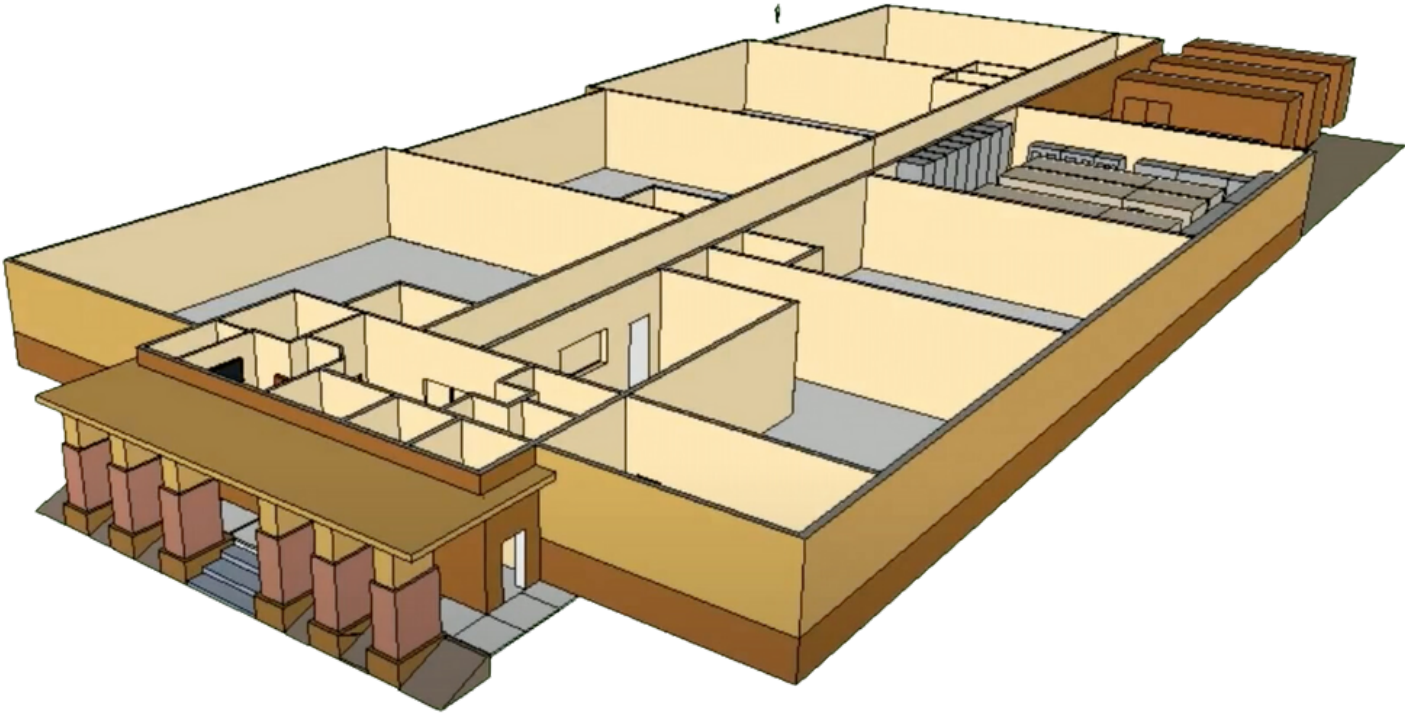
---

**CUSTOMER WORKING SPACE** - Secure staging/storage, office suites, conference room, work stations, TV entertainment lounge

---



# FLOOR PLAN

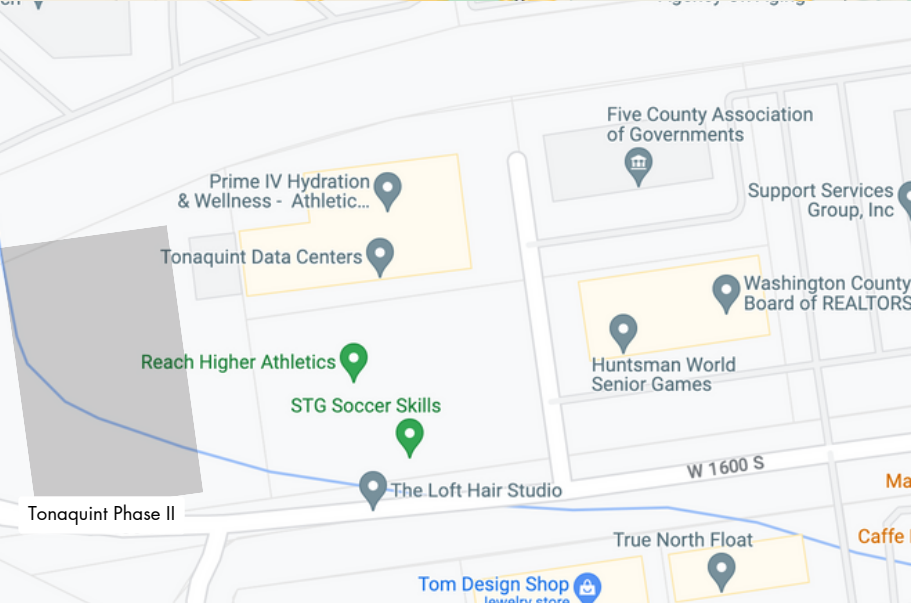




# SITE PLAN: 1108 W 1600 S



# LOCATION AERIAL & MAP





# CONTACT INFORMATION

FOR MORE INFORMATION OR TO SET UP A  
PROPERTY TOUR, PLEASE CONTACT:

MATT HAMLIN  
CEO | Tonaquint Data Centers  
PHASE II Development  
O: 888.414.8818  
C: 435.632.8286  
matt@tonaquint.com



[www.tonaquint.com](http://www.tonaquint.com)